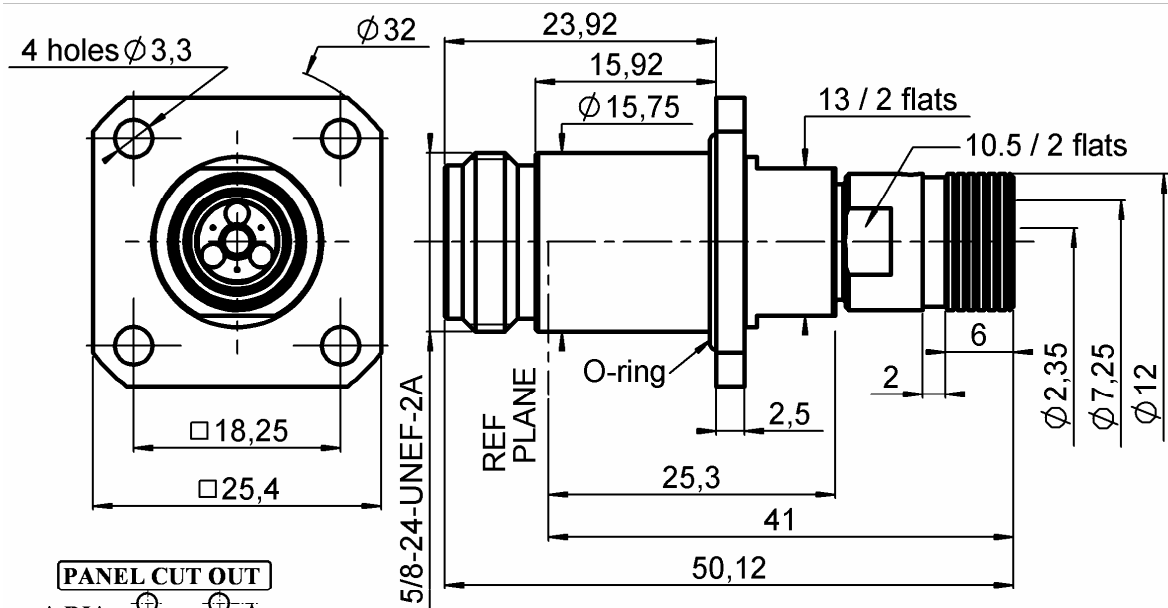


**STRAIGHT BULKHEAD JACK PANEL SEAL**

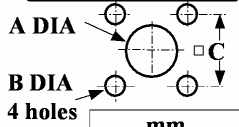
**R163.298.L00**

**SOLDER TYPE CABLE SHF8M/8LI**

Series : N-18

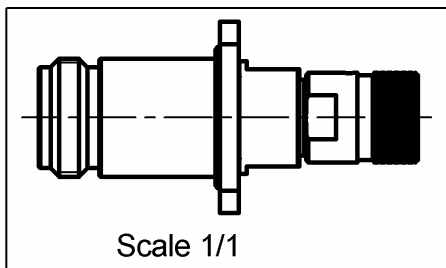
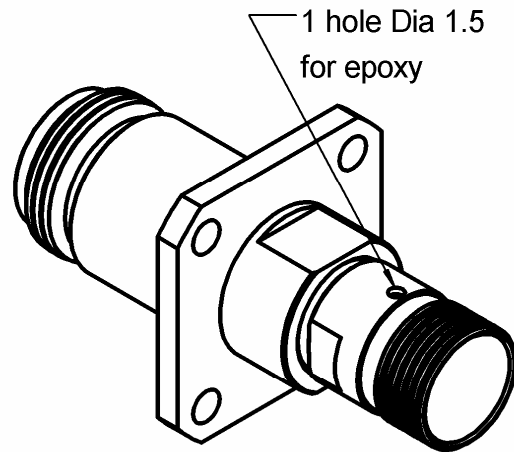


**PANEL CUT OUT**

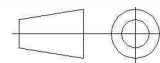


	mm	
	Maxi	mini
A	16	15.9
B	3.4	3.2
C	18.35	18.15

**MAT ASPECT**



All dimensions are in mm.



COMPONENTS	MATERIALS	PLATING (µm)
BODY	STAINLESS STEEL (316L)	PASSIVATED .
CENTER CONTACT	BERYLLIUM COPPER, BRASS	GOLD 1.3 OVER NICKEL 2
OUTER CONTACT	-	-
INSULATOR	ULTEM	-
GASKET	FLUOROSILICON	-
OTHERS PARTS	BRASS	GOLD 0.2 OVER NICKEL 2
-	-	-
-	-	-

Issue : 0624 A

In the effort to improve our products, we reserve the right to make changes judged to be necessary.



**STRAIGHT BULKHEAD JACK PANEL SEAL**

**R163.298.L00**

**SOLDER TYPE CABLE SHF8M/8LI**

Series : N-18

**PACKAGING**

Standard	Unit	Other
<b>1</b>	-	<b>Contact us</b>

**SPECIFICATION**

**ELECTRICAL CHARACTERISTICS**

Impedance		<b>50</b> Ω
Frequency		<b>0-18</b> GHz
VSWR	<b>1.15 +</b>	<b>0,0000</b> x F(GHz) Maxi
Insertion loss		<b>0.1</b> √F(GHz) dB Maxi
RF leakage	- (	<b>90</b> - F(GHz)) dB Maxi
Voltage rating		<b>500</b> Veff Maxi
Dielectric withstanding voltage		<b>1500</b> Veff mini
Insulation resistance		<b>5000</b> MΩ mini

**CABLE ASSEMBLY**

Stripping	a	b	c	d	e	f
mm	0,00	2,50	0,00	0,00	0,00	0,00

Assembly instruction :

Recommended cable(s)  
F1703-160  
F1703-197

Characteristics indicated on this data sheet are those that can be achieved with the highest performance cable. Intrinsic limitations of the cable may diminish the performance of the assembly

Cable retention

- pull off **\*\* N mini**  
- torque **NA N.cm**

**MECHANICAL CHARACTERISTICS**

Center contact retention		
Axial force – Mating end	<b>27</b>	<b>N mini</b>
Axial force – Opposite end	<b>27</b>	<b>N mini</b>
Torque	<b>NA</b>	<b>N.cm mini</b>

**TOOLING**

Part Number	Description	Hexagon
.	.	.

Recommended torque		
Mating	<b>NA</b>	<b>N.cm</b>
Panel nut	<b>NA</b>	<b>N.cm</b>
Clamp nut	<b>300</b>	<b>N.cm</b>
A/F clamp nut	<b>10,5000</b>	<b>mm</b>

Mating life	<b>500</b>	<b>Cycles mini</b>
Weight	<b>48,1370</b>	<b>g</b>

**OTHER CHARACTERISTICS**

\*According to CEI 68-2-17 Test Qk  
\*\* See to the TDS of cable assembly

**ENVIRONMENTAL**

Operating temperature	<b>-55/+85</b>	<b>° C</b>
Hermetic seal	<b>*10-6</b>	<b>Atm.cm3/s</b>
Panel leakage	<b>IP67</b>	

Issue : 0624 A

In the effort to improve our products, we reserve the right to make changes judged to be necessary.

